

We recommend that you refer to the guidelines below when choosing box sizes for home or office:

Small Moving Box

Dimensions: 12" x 12" x 16" (H x W x D)

Use the small size for packing compact or heavy items like photo albums, CDs, books, dishes, glassware, etc.



Medium Moving Box

Dimensions: 16" x 18" x 18" (H x W x D)

Use the medium size for packing mid-weight items like kitchen appliances, toys, or shoes.



Large Moving Box

Dimensions: 18" x 18" x 24" (H x W x D)

Use the large size for packing lighter, bulkier items, such as towels, bedding, cushions, or clothing.

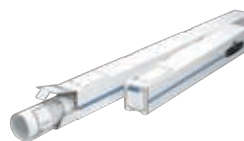


Other Moving Kit Items



Storage Box Labels

The most convenient way to label moving boxes! Available in white or assorted colors for easy color-coded organization.



Roll-Stor Tubes

Transport important documents and posters without folding or wrinkling the paper.